

# MILITEC

## M4400 Battery powered moving target system.



- Power requirement:- Two 12Vdc 55Ahr. Sealed lead acid batteries.
- Control. Radio 458 MHz. transceiver.
- Speed Four selectable speeds, from the handset or computer, between 1.0 and 3.0m/s.
- Weight:- Traction unit 54Kilos without batteries.  
Batteries 18kilos each.  
Slave trolleys 9.5 kilos each.  
M3200 pop-up 28 kilos each.
- Dimensions:- Overall length of traction unit. 1.16 mtrs.  
Max. height when on the track. 130mm. from ground level.  
Overall length of each slave trolley.0.59 mtrs.  
Max. metal height with M3200 fitted. 0.45 mtrs. from ground level.
- Track spec. Width 0.70mtrs.  
Length of individual tracks, 2 mtrs. standard.
- Capability Tow/push, Max. weight 100 kilos.
- Battery charging. Batteries plug into identical heavy duty connectors mounted on the B250 Charger.  
Charging time 8 hours.

Militec Ltd., Unit 16, Cwm Cynon Business Park, Mountain Ash, Mid-Glam, UK. CF45 4ER  
Tel:- ++44(0)1443 476849. Fax:- ++44(0)1443 478822

Email:- [sales@militec.co.uk](mailto:sales@militec.co.uk)

Copywrite © Militec 2009



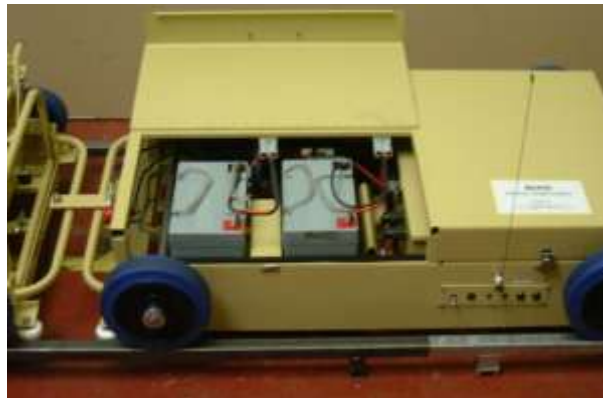
### Deployment of the M4400 system for use.

The rails are laid out on a flat surface, preferably a concrete strip. All rails are identical and simply slot together, in hot climates it is recommended that a slight gap between the rails is allowed, 1.0-1.5mm for expansion.

In permanent set-ups, where the rails are intended to remain fixed, concrete fixing bolts would be supplied.

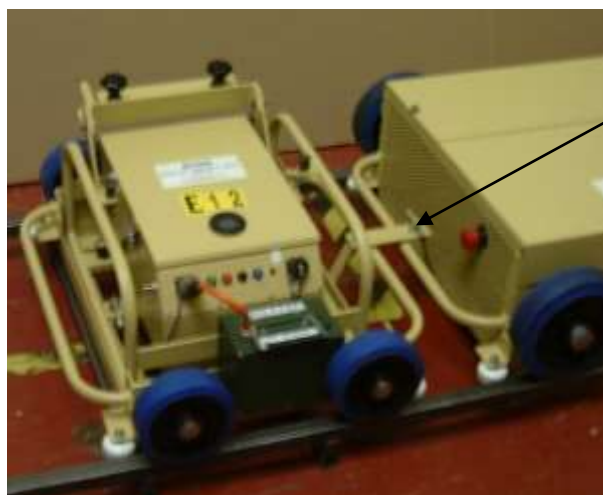
Slow down and Stop magnets are fitted to each end of the track.

The photograph shows the battery compartment lid open. This allows easy access to the two batteries. Connection from the batteries to the unit being via two heavy duty Push fit forklift type connectors.



A quick fit connecting bar enables the trolleys to be easily attached to the traction unit. No tools required.

Similarly each M3200 pop-up target unit is securely located on its trolley. No tools required.



**Quick fit  
Anti-luce bracket.**